

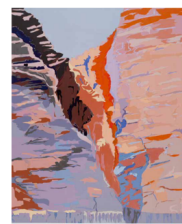
# RICHARD DUNN 'After Namatjira' to 'Blasted Geometries'



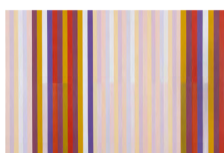
Redbank Gorge 1936, (After Albert Namatjira), small version, 2015-2016, 100 x 82 cm, Acrylic on canvas  
\$15,000



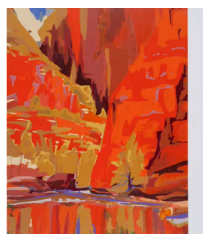
Redbank Gorge, MacDonnell Ranges, c.1936-37, (After Albert Namatjira), 2015-2016, 100 x 82 cm, Acrylic on canvas  
NFS



Redbank Gorge, 1936, (After Albert Namatjira), 2002-2010  
200 x 165 cm, Acrylic on canvas  
\$35,000



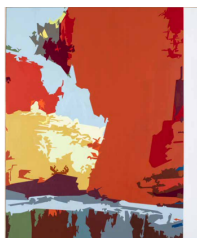
Polychrome, Redbank Gorge, (After Albert Namatjira), 2011, 120 x 180 cm, Acrylic on canvas  
\$16,500



Quarta-tooma, (Ormiston Gorge), 1932 (After Albert Namatjira) No 2, 2002-2012, 200 x 165 cm, Acrylic on canvas  
\$35,000



Polychrome, Quarta Tooma, (After Albert Namatjira) 2011, 120 x 190 cm, Acrylic on canvas  
\$16,500



Quarta-Tooma (Ormiston Gorge), 1939, Blasted Geometries, 2018, 200 x 165cm, Acrylic on canvas  
\$35,000



Standley Chasm c.1942-49 (After Albert Namatjira) Blasted Geometries, 2018, 200 x 165 cm, Acrylic on canvas  
\$35,000



Standley Chasm, (After Albert Namatjira), 2011-2012, 150 x 98 cm, Woodblock monoprint  
\$7,000



Redbank Gorge, (After Albert Namatjira), 2011-2012, 150 x 98 cm, Woodblock monoprint  
\$7,000

All works are for sale, please contact Concierge or Reception, level 1. Prices are inclusive of GST

The exhibition program at Sofitel Melbourne On Collins is managed by Global Art Projects.

[www.gap.net.au](http://www.gap.net.au) or contact [gap@gap.net.au](mailto:gap@gap.net.au)

**SOFITEL**  
HOTELS & RESORTS

MELBOURNE ON COLLINS

**GLOBAL  
ART PROJECTS.**