

EMMA BORLAND

ATRIUM GALLERY LEVEL 35
SOFITEL MELBOURNE ON COLLINS
25 COLLINS STREET MELBOURNE

1 DECEMBER 2022 – 31 MARCH 2023



Emma Borland
Form 1 2022
fused Aventurine, Oceanside and Youghioghenny glass
41 x 31 cm
\$3,500



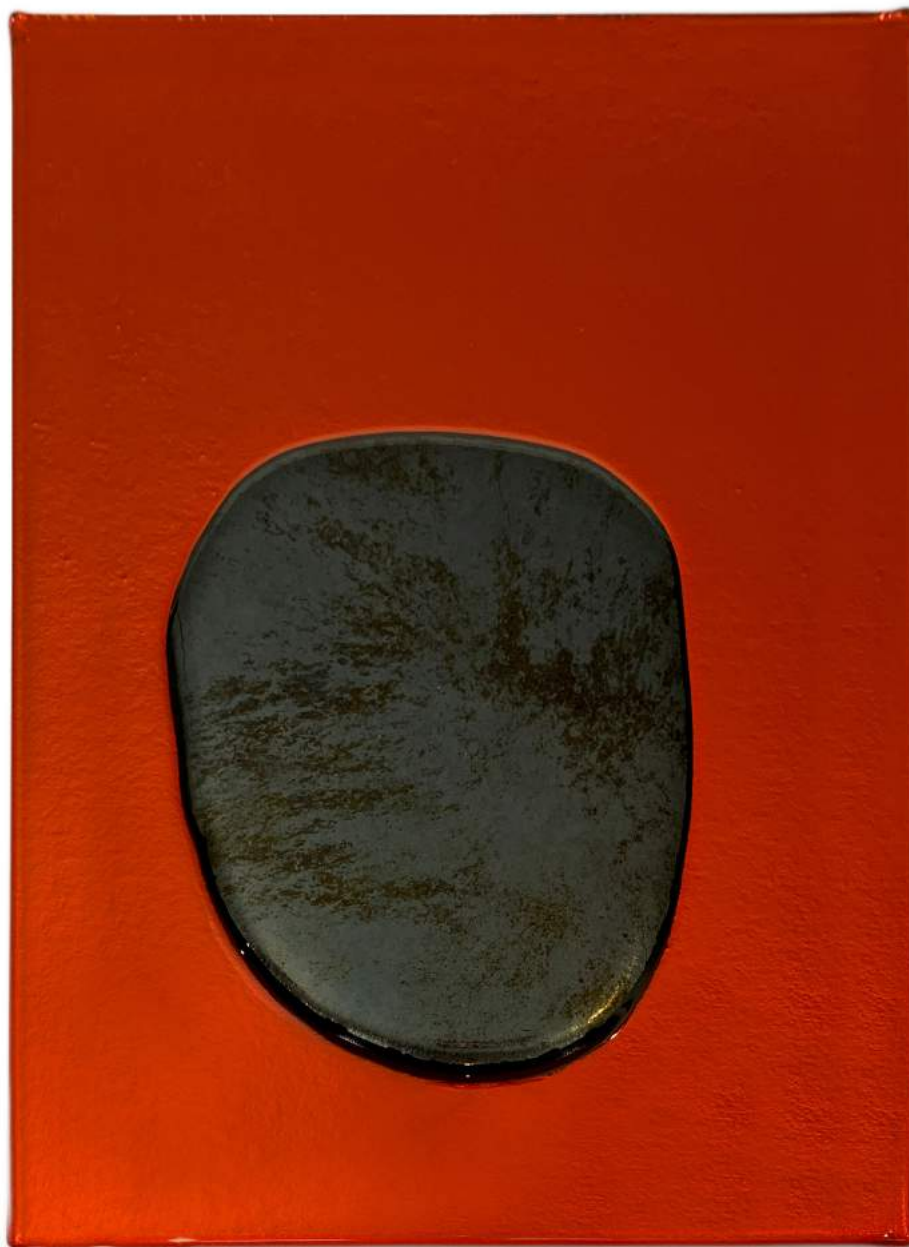
Emma Borland
Form 18 2022
fused Oceanside and Youghiogheny glass, mirrored
41 x 31 cm
\$3,500



Emma Borland
Form 3 2022
fused Oceanside and Youghioghney glass
41 x 31 cm
\$3,500



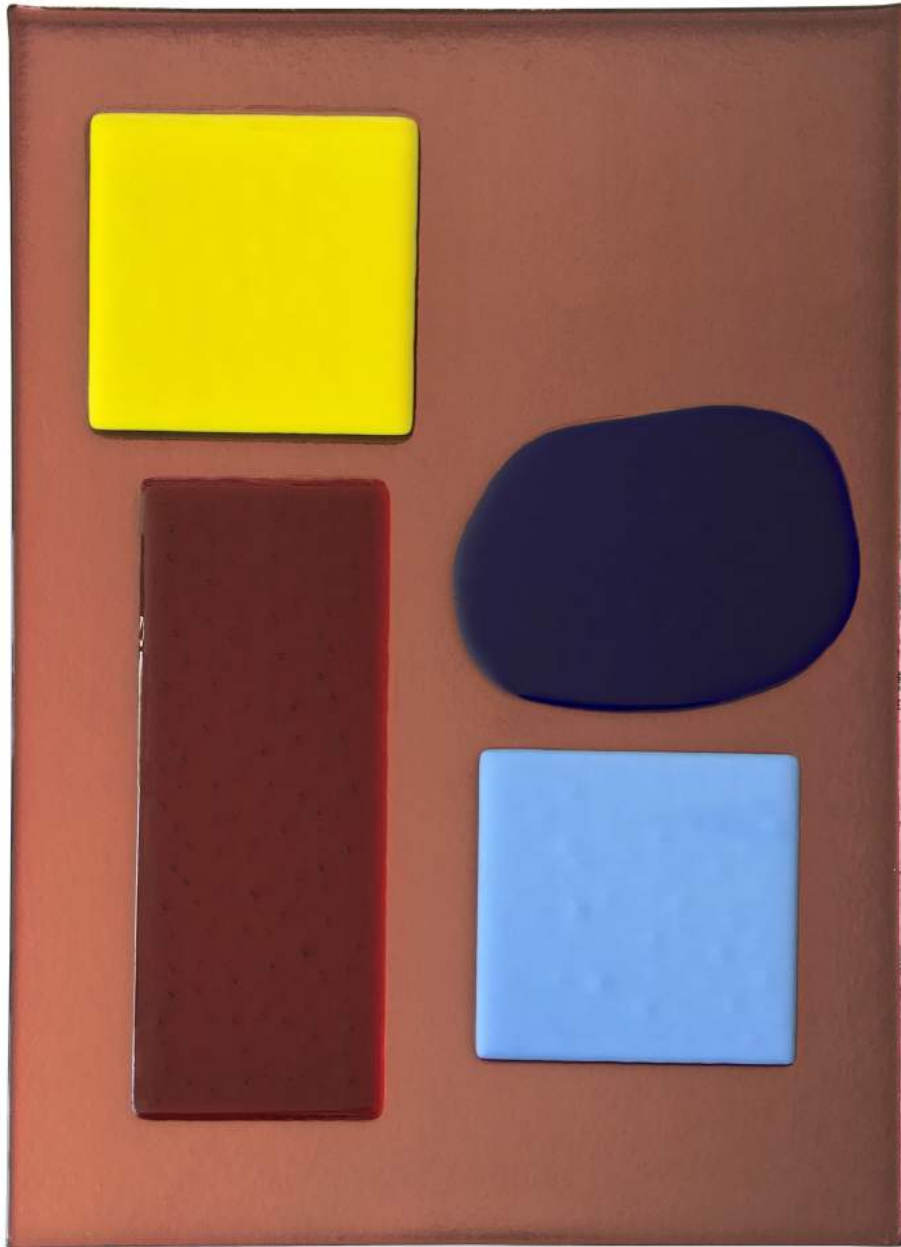
Emma Borland
Form 4 2022
fused Oceanside and Youghiogheny glass, mirrored
41 x 31 cm
\$3,500



Emma Borland
Form 19 2022
fused Oceanside and Youghioghney glass, mirrored
41 x 31 cm
\$3,500
RESERVED



Emma Borland
Form 7 2022
fused Oceanside and Youghioghney glass
41 x 31 cm
\$3,500



Emma Borland
Form 11 2022
fused Oceanside and Youghiogheny glass, mirrored
61 x 41 cm
\$5,500



Emma Borland
Form 12 2022
fused Oceanside and Youghioghney glass, mirrored
61 x 41 cm
\$5,500



Emma Borland
Form 13 2022
fused Oceanside and Youghiogheny glass, mirrored
61 x 41 cm
\$5,500



Emma Borland
Form 15 2022
fused Oceanside and Youghioghery glass
61 x 41 cm
\$5,500



Emma Borland
Form 16 2022
fused Oceanside and Youghioghney glass
61 x 41 cm
\$5,500

Murray White Room, in association with Global Art Projects and the Sofitel on Collins, presents the Summer Salon exhibition *Emma Borland* – a new series of abstract fused glass panels, kiln fired in a range of fine Aventurine, Oceanside and Youghioghney glasses.

"This body of work explores the interaction of colour and form within the medium of glass. It recognises the relationship between the translucent, the reflective, and the opaque qualities inherent in the material. I strive to demonstrate the subtlety and tactile nature of these properties in relief. This exploration is informed by my early engagement with lead light and stained glass and its ability to transform space and place by interacting with light. In each of these works I am creating a new language to allow the glass to express its unique aspects. This language draws from the inspiration of my father's expression of colour and form in architecture."

– Emma Borland, 2022

The youngest daughter of celebrated Australian modernist Architect, the late Kevin Borland, Emma's early immersion in art and architecture is evidenced in these abstract Forms. These elegant and sophisticated works can also be traced to her late mother Margaret Borland's personal interest and passion for Scandinavian jewellery, furniture and design.

Since the outset of her career the aesthetics of naïve and outsider art have remained central influences on Borland's art practice. As the youngest sister of lauded artist photographer Polly Borland, both artists share an interest in psychology, vulnerability and the marginalised, which presents in both artists' figurative and abstract works. This shared bond was highlighted in the major two-person survey *Borland + Borland* curated by Artistic Director Magda Keaney at Canberra Glassworks in 2015.

"Emma Borland's compositional devices are what I would call a 'suggestive figuration' where an allusion to a physicality is fundamental but in an abstracted or transformative state."

– Magda Keaney, Artistic Director, Canberra Glassworks, 2015

"Depicting inner emotion and psychological states of mind. The images are free flowing, relating to amorphous embryonic forms; seemingly nebulous and fluid ... the artist relates these forms to the human condition which she sees as becoming increasingly fragile and vulnerable. They suggest a more elemental entity that projects a different worldview underlined by Emma's interest in outsider art."

– Kerry-Anne Cousins, The Canberra Times, 2015

Over the last two decades Borland has undertaken a broad formal education specialising in glass media, including a MA in Fine Art by Research (Glass), and a MA in Teaching, both at Monash University, Melbourne; early training in glass techniques and technology at the Brierley Hill International Glass Centre, Dudley College of Technology, United Kingdom; and Masterclasses under the late Klaus Moje AO at Canberra Glassworks.

Despite this formal training Emma Borland's original and personal imagery remains true to her 'uncultured' childhood drawings and sculpture pre-art school. Emma Borland currently lives and works in outer Melbourne's Dandenong Ranges and works as a full-time teacher of special needs children in tandem with her technically sophisticated studio practice.

Murray White Room acknowledges the traditional custodians of Country and recognises their continuing connection to land, waters, and culture.

We respect their Elders past and present.

We recognize sovereignty has not been ceded
by the 250 first nations recorded in 1996.